



ADOPT A PAINTING IN THE GALLERY

OF THE GRAND TRIANON PALACE

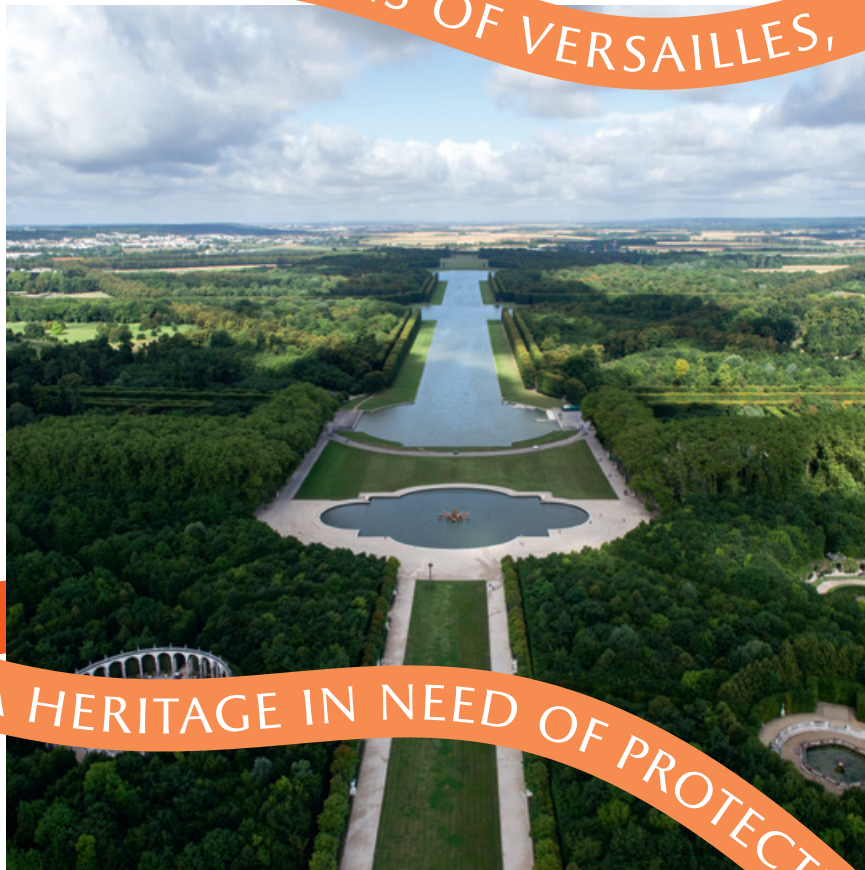


CHÂTEAU DE VERSAILLES

**PRESERVING THE MEMORY
OF LOUIS XIV'S GARDENS**

WWW.CHATEAUVERSAILLES.FR/SOUTENIR-VERSAILLES

THE GARDENS OF VERSAILLES,



A HERITAGE IN NEED OF PROTECTION

By adopting a painting you can contribute to the restoration of one of the paintings in the gallery of the Grand Trianon Palace.

In 1688, Louis XIV commissioned three artists to produce a cycle of 24 paintings capturing the gardens of Versailles.

Jean Cotelle received the bulk of the commission, with Etienne Allegrain producing two paintings and Jean-Baptiste Martin the Elder contributing one.

The groves, parterres, pools and fountains represented in these paintings, now displayed in the Grand Trianon in a room which has come to be known as the “Cotelle Gallery”, represent a crucial historical testimony to the landscaping innovations of André Le Nôtre. Many of these features have since disappeared or been altered.



Galerie des Cottele

The Cottele Gallery, a grand picturebook

We are inviting donors, both private and corporate, to “adopt” a picture of their choice, and thus participate in the restoration of this exceptional collection of artworks. Of the 24 paintings featured in the Grand Trianon gallery, 15 are in need

of fundamental restoration work to secure the future of the canvas and the paint. This work will be entrusted to restoration experts who specialise in such operations.

On the back of this brochure you can see full details of the paintings up for adoption.

SCIENCE



With the help of the Palace’s curator of 17th-century paintings, the workshops at the National Museums’ Centre for Research and Restoration (C2RMF) will be entrusted with the task of painstakingly restoring each adopted painting: organization of restoration committees, use of scientific imaging techniques (ultraviolet, infrared, X-rays) and, where necessary, chemical analysis and stratigraphic studies. Every step of the restoration process will be documented with detailed photographic records.

IN THE NAME OF ART

ADOPT A PAINTING

HOW CAN I ADOPT A PAINTING?

Select your painting and get in touch with our donor relations department for a full information pack.

HOW MUCH WILL ADOPTING A PAINTING COST?

The estimated budget for the full restoration of each painting is €25,000. After income tax deductions, the cost of the adoption is equivalent to €8,500 for French tax payers and €10,000 for companies with a subsidiary in France (donations tax deductible by 66% and 60% respectively).



Grand Trianon

Information and advice:

Serena Gavazzi, Julie Boulage and Clara Savouré

By telephone: + 33 (0)1 30 83 77 04

By email: serena.gavazzi@chateauversailles.fr

IN RECOGNITION OF YOUR GENEROSITY

FOR PRIVATE DONORS

Acknowledgement

Your name, or the name of the person you wish to dedicate your donation to, will be displayed in the Cotelle Gallery, featuring on the information panel next to the painting which has been restored thanks to your support.

Follow the progress of the restoration

You can keep up with the restoration of your "adopted" painting throughout every step of the process, with specially-organised visits to the C2RMF, restoration workshops and presentations from the experts (restoration specialists and curators).

Photo rights

You will have free rights to use photographs of your adopted painting on your greeting cards, for example.



"A Year at Versailles" annual pass

You will also receive an annual pass offering unlimited access to the Palace for a whole year.

FOR COMPANIES

Acknowledgement

The name of the company will be displayed in the Cotelle Gallery, featuring on the information panel next to the "adopted" painting.

Site Visits

Donor companies can keep up with the restoration of their adopted painting with specially-organised visits to the C2RMF restoration workshops and presentations from the experts (restoration specialists and curators).

Photo rights

Donor companies will have free rights to use photographs of the "adopted" painting, belonging to the Public Institution for Versailles, to advertise their contribution to this restoration campaign, and for communication purposes (internal reports, greeting cards etc.).

Entrance tickets

Donor companies are entitled to free passes to visit the Palace and Estate of Versailles during public opening hours.

"A Year at Versailles" annual pass

Companies contributing to this campaign will also receive "A Year at Versailles" annual passes which they may pass on to employees or partners, offering unlimited access to the Palace for a whole year.

Venue hire

Donor companies may also make use of certain reception spaces within the Palace and Estate of Versailles to organise events for PR purposes (private tours outside the public opening hours, cocktail receptions, dinners).

Such benefits are offered up to a maximum value equivalent to 25% of the donation.

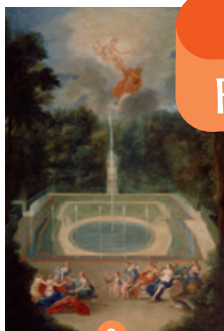
PAINTINGS UP

FOR ADOPTION

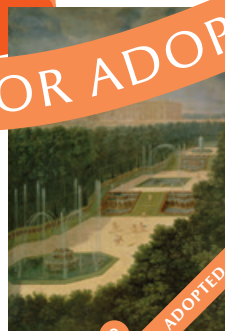


1

ADOPTED

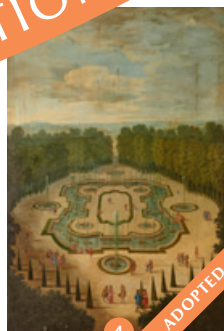


2



3

ADOPTED



4

ADOPTED



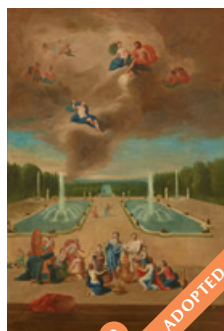
6



7

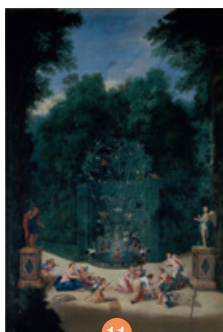


8

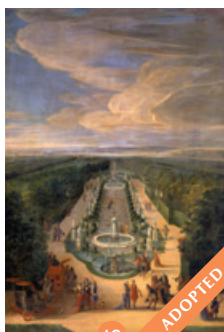


9

ADOPTED



11

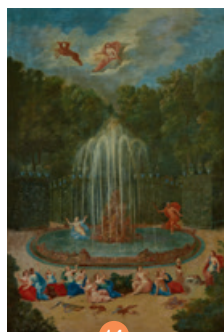


12

ADOPTED



13



14

1 Enceladus Grove,
Jean Cotelle

View of the Enceladus Fountain and the Feast of Lycaon

2 Lower Fountain,
Jean Cotelle

View of the fifty-two jets of the Trianon, with Mars and Venus in front of Apollo and Vulcan

3 Grove of the Three
Fountains, Jean Cotelle

View in perspective of the Three Fountains, with bathing cherubs

4 Obelisk Grove,
Etienne Allegrain

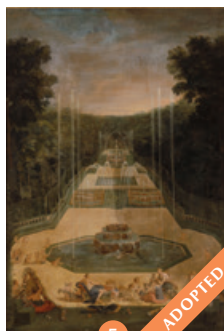
The Banquet or Council Room

5 Grove of the Three
Fountains, Jean Cotelle

View of the Three Fountains, with Venus teaching cherubs to shoot a bow

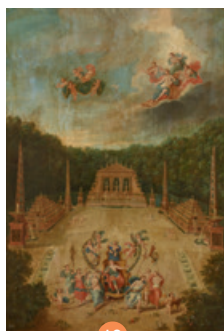
6 Mirror Pool,
Etienne Allegrain

The Mirror Pool and Royal Isle

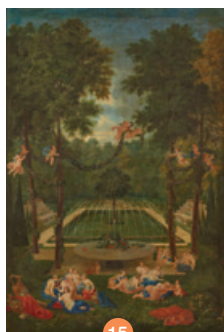


5

ADOPTED



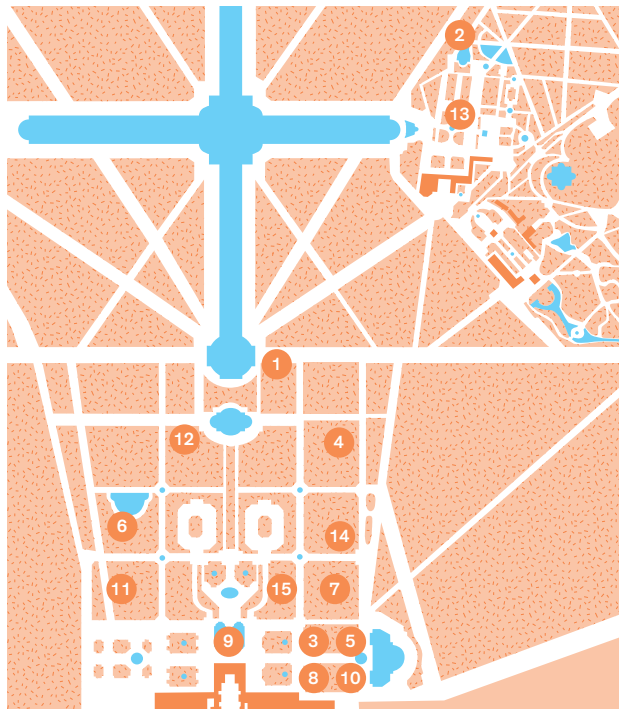
10



15

7 Theatre Grove,
Jean Cotelle

View of the Theatre Grove with nymphs preparing to welcome Psyche



8 Triumphal Arch Grove,
Jean Cotelle

View of the Triumphal Arch and statue of France Triumphant, with nymphs chaining up captives before Mars and Venus

9 Water Parterre,
Jean Cotelle

View of the Parterre d'Eau and Animal Statues, with priestesses preparing a sacrifice to Venus

10 Triumphal Arch Grove,
Jean Cotelle

View of the Triumphal Arch with Venus receiving Mars

11 Queen's Grove,
Jean Cotelle

View of the Entrance to the Maze with birds, nymphs and cherubs

12 Chestnut Grove,
Jean-Baptiste Martin the Elder

Perspective view of the Antique Gallery Grove at Versailles

13 Trianon Parterres,
Jean Cotelle

View of the Trianon Parterres with Flora and Zephyr

14 Star Grove,
Jean Cotelle

View of the Star or Grand Fountain with Alpheus pursuing Arethusa

15 Apollo Grove,
Jean Cotelle

View of the Marais with Venus consoling the nymph Echo