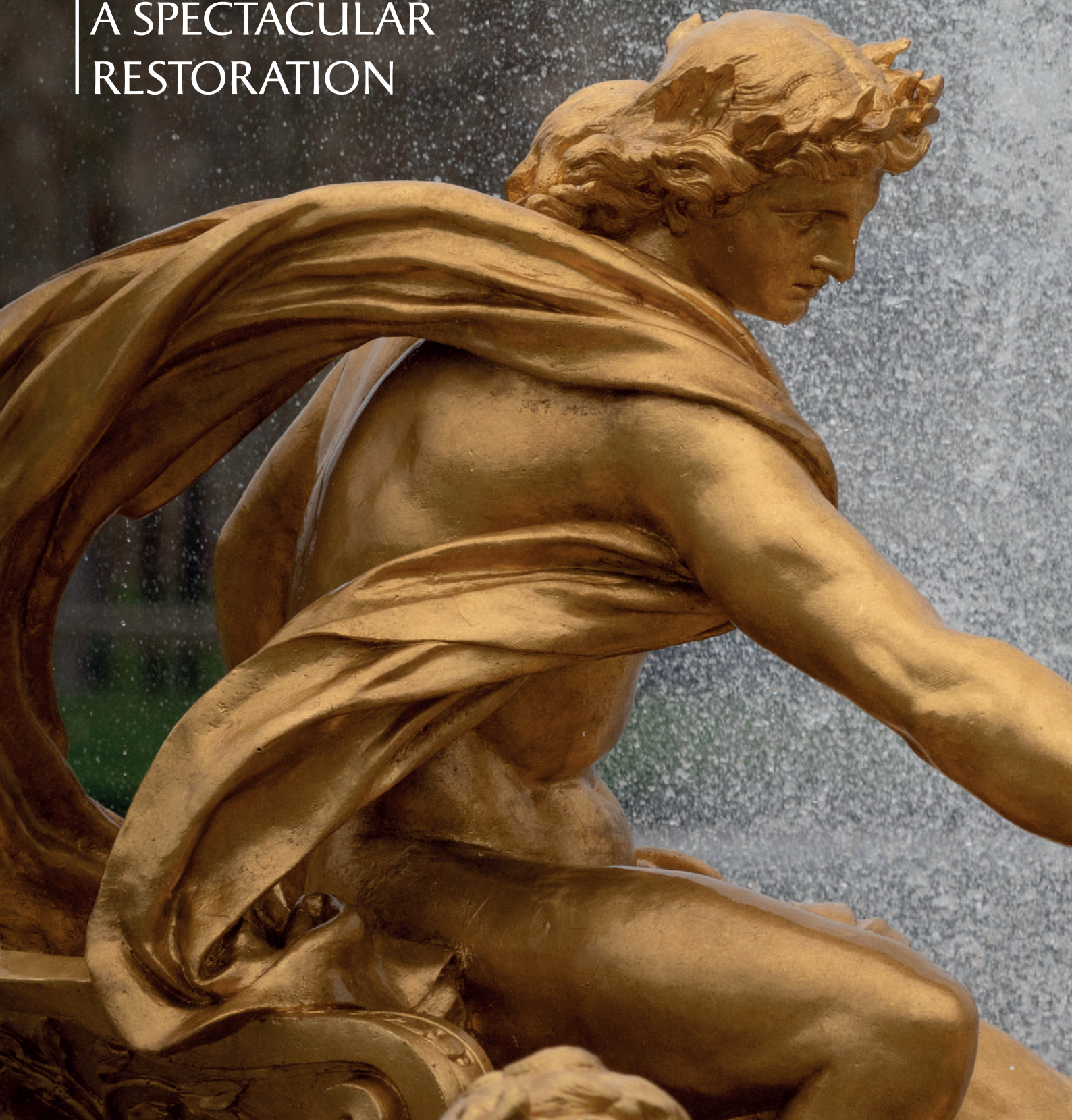




CHÂTEAU DE VERSAILLES

APOLLO'S FOUNTAIN

A SPECTACULAR
RESTORATION





Apollo's Chariot Basin prior to restoration © Palace of Versailles, T. Garnier

*“The soul of
the Gardens
lies in the
fountains
and water.”*

*Theory and practice of gardening with
a thorough examination of fine gardens [...],
Dezallier d'Argenville, 1709.*



Gilding of Apollo by Atelier Gohard © Palace of Versailles, M. Riolet

CONTENTS

Press release	p.6
APOLLO'S FOUNTAIN	P.11
History of the Apollo Basin	p.12
A COMPREHENSIVE RESTORATION	P.19
Stages of the restoration	p.20
Before and after	p.30
THE PATRON	P.37
CMA CGM Group	p.38
ALONGSIDE THE RESTORATION	P.41
Performances	p.42
2024: Year of the Horse at Versailles	p.44
Publications	p.46
PRACTICAL INFORMATION	P.49

PRESS CONTACTS

Hélène Dalifard, Violaine Solari, Elodie Mariani,
Barnabé Chalmin
+33 (1) 30 83 75 21 - presse@chateauversailles.fr
chateauversailles.fr/presse

APOLLO'S FOUNTAIN

A SPECTACULAR RESTORATION

Versailles, 29 March 2024
Press release

As of 29 March, the public will rediscover Apollo's fountain, fully restored in all its cascading glory after 18 months of comprehensive restoration work made possible thanks to the patronage of CMA CGM Group. This large-scale heritage initiative is reviving the harmony and visual synchronisation of an iconic fountain within the Gardens of Versailles. Prior to the Paris 2024 Olympic equestrian competitions, set to take place in the Park of Versailles, the Grande Perspective appears once again as envisaged by Louis XIII and Louis XIV.

AN ICONIC FOUNTAIN WITHIN THE GARDENS OF VERSAILLES

Located at the centre of the Grande Perspective at the end of the Royal Way running from the Palace to the Grand Canal, the Apollo Basin is undoubtedly one of the most renowned basins in the Gardens of Versailles. Designed by Jean-Baptiste Tuby between 1668 and 1671, early in the reign of Louis XIV, and constructed at the

Manufacture des Gobelins, the basin is adorned with the sculptural group representing Apollo's Chariot. This monumental lead sculpture comprises 13 statues and weighs some 30 tonnes. At the centre of the piece, Apollo stands on his four-horse chariot, accompanied by a cherub. Tritons mark the four cardinal points of the composition, while dolphins are perched in the spaces between them. Each sculpture adopts a unique, gushing posture, contributing to the dynamism of the work.



Aerial view of Apollo's Basin © Palace of Versailles, T. Garnier

A COMPREHENSIVE RESTORATION

The last major restoration campaign on the basin took place nearly a century ago, between 1929 and 1933. Despite constant maintenance, Apollo's Chariot suffered from the constant humidity, exhibiting important technical problems due to corrosion of the internal framework, significant deterioration of the lead, severe erosion of the surface coating and disruption of the water features.

The project now being completed included restoration and consolidation of the lead structures, as well as re-gilding and brightening of the surface to accentuate the lifelike volumes and re-create the original bronze colour. Carried out under the management and supervision of Jacques Moulin, Chief Architect for France's Historic Monuments, this heritage campaign required the participation of many highly skilled restoration craftsmen: founders, gilders, as well as fountain artisans.

Visitors from around the world can now admire Apollo's fountain in all its dazzling beauty, marvelling at water features that epitomize the grandeur of the Gardens of Versailles today just as they did under Louis XIV.

APOLLO'S CHARIOT IN FIGURES

- **394FT.** long and **262FT.** wide (nearly **2.5** acres)
- **2M** (6.5 ft.) deep
- **13** sculptures
- **35** tonnes of sculptural work
- **6,5** tonnes for Apollo alone
- **31** nozzles restored
- **35,000** sheets of gold leaf applied

2024: YEAR OF THE HORSE AT VERSAILLES

As host of this summer's Olympic equestrian events, all year long the Palace of Versailles will undertake to highlight the essential role horses have played in the history of Versailles and the Palace's artistic collections.

The restoration of Apollo's fountain is an initial milestone in the run-up to a major exhibition devoted to horses and equestrian civilisation in Europe, set to open on 2 July.



Resumption of water features in Apollo's fountain following restoration © Palace of Versailles, T. Garnier



PALACE

LATONA BASIN

ROYAL WAY

APOLLO'S FOUNTAIN

GRAND CANAL



PART I | APOLLO'S
FOUNTAIN

HISTORY OF APOLLO'S FOUNTAIN

In the axial perspective of the Gardens of Versailles, the Apollo Basin marks the junction of the Royal Way and the Grand Canal. The basin is adorned with a sculptural group representing Apollo's Chariot, drawn by four horses and surrounded by a cherub, four tritons and four dolphins.



Aerial view of Apollo's Chariot
© Palace of Versailles, T. Garnier

- APOLLO AND CHERUB
- HORSES
- TRITONS
- DOLPHINS

A BASIN BUILT UNDER LOUIS XIII

Generally considered one of the first beautification projects carried out under Louis XIV, the Apollo Basin was in fact dug during the reign of Louis XIII, between 1633 and 1636, along the contours designed by Royal Gardener Jacques Boyceau. It was originally known as the Swan Basin.

Shaped as a quatrefoil rectangle, from the beginning it exhibited the extraordinary dimensions we know still today: 394 ft. long and 262 ft. wide. It is the only structure built under Louis XIII that survives in its entirety within in the Gardens of Versailles. However, it was initially designed as a simple pool, with no sculptural embellishments.



Overview of Versailles from the Apollo Basin, Imprimerie Becquet, 19th century
© Palace of Versailles



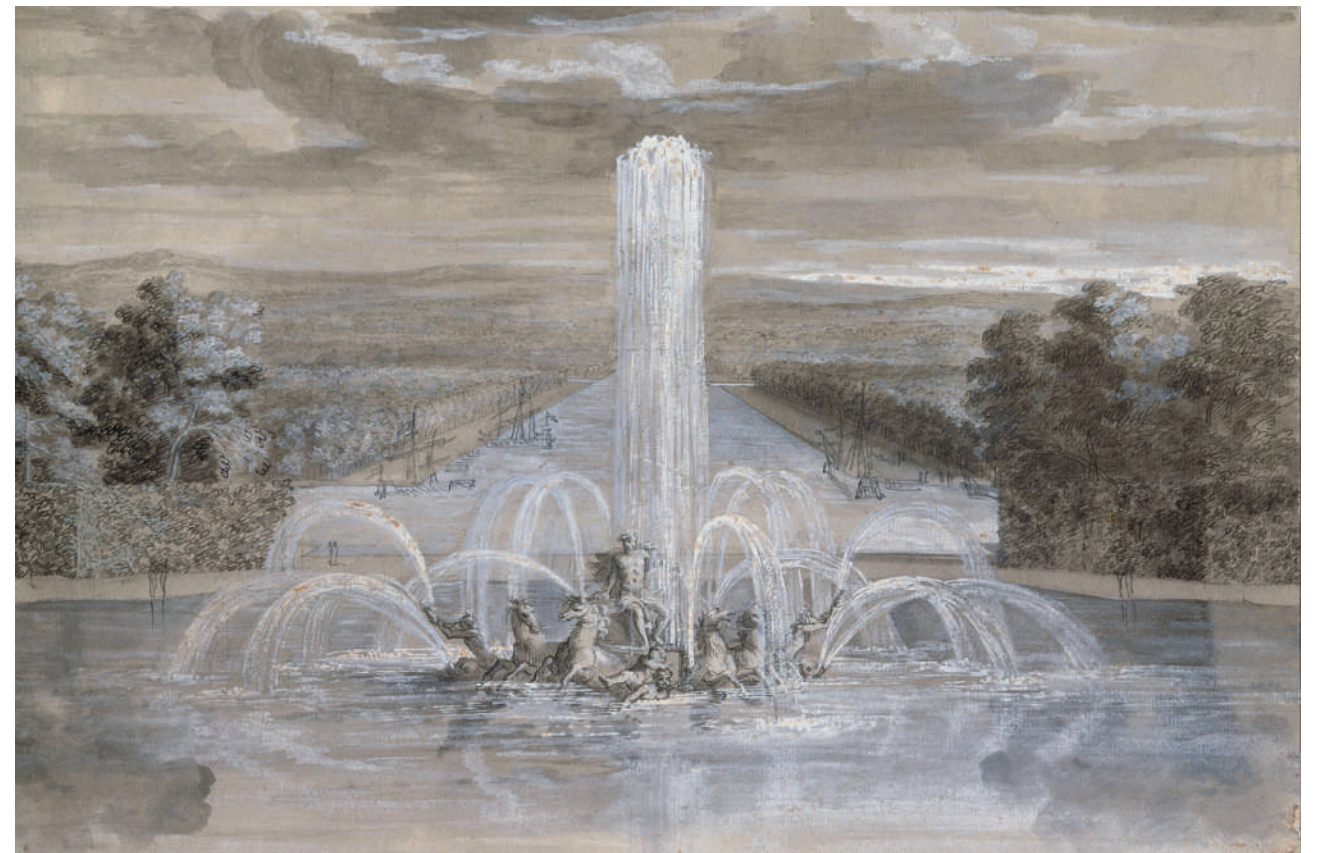
Apollo fountain, at the extremity of the Grand Canal of Versailles, Louis de Chastillon, 1683
© Palace of Versailles, Dist. RMN © Christophe Fouin

A SCULPTURAL GROUP ORDERED BY LOUIS XIV

In 1668, Louis XIV commissioned from Jean-Baptiste Tuby a sculptural group representing Apollo driving the *Sun Chariot* to adorn the Swan Basin, which capped the perspective of the Garden. Considering the size of the basin, any decoration had to be massive. The sculptural group was constructed at the Manufacture des Gobelins and installed at Versailles in 1761.

André Le Nôtre is said to have imagined the general concept for the work, but Tuby instilled in his design a degree of uniformity and power without equal among contemporary Versailles fountains. Indeed, the Gardens of Versailles owe to Tuby their inimitable Roman baroque grandeur.

In line with Louis XIV's vision of the Gardens' allegorical and mythological essence, Apollo's fountain represents the sun god's journey at dawn. The sculptures comprising the Sun Chariot were enhanced by large vertical streams of water, as well as fountain effects seemingly designed to depict the dolphins' breath and the splashing of the galloping steeds, "*creating an effect as if the horses themselves were thundering through the water*". The sculpture as a whole was thus designed with the same spirit of naturalist realism that defines the works adorning the Latona Fountain, and never was a sculptural group of mythological inspiration so perfectly paired with a basin at Versailles. Located at the juncture of the Petit Parc and Grand Parc, it underscored the scale of the new estate, continually expanded by Louis XIV throughout his reign.



Drawing representing Apollo's fountain, Israël Silvestre, ca. 1680, Paris, Louvre Museum, Graphic Arts Department
© RMN-Grand Palais (Louvre Museum) / Jean-Gilles Berizzi

PREVIOUS RESTORATION PROJECTS

The sculptural group showed signs of deterioration from the very beginning. In 1672, one year after it was placed in the gardens, Colbert wrote: *“I was very surprised to find one of Apollo’s horses lying on its side. Attempts are being made to right it.”*

During the 18th and 19th centuries, several isolated restoration procedures were carried out on listing, collapsing or malfunctioning sculptures, as well as on the basin itself and the stone foundation. Between 1737 and 1738, sculptor Jean-Baptiste Lemoyne reconditioned one of the four horses.

In 1923, the Historical Monuments Commission announced that the sculptural group was in an unsettling state of disrepair.

“Apollo’s Chariot is about to cave and collapse!”

exclaimed the French Minister of Education and Fine Arts, Léon Bérard, during a 1923 visit to Versailles, in a bid to inform the public that restoration was urgently called for.

In 1929, sculptor Georges Gardet and founder Eugène Rudier launched a comprehensive restoration of the group, led by architect Patrice Bonnet. The procedure included righting a listing triton, replacing the framework inside the dolphins with lead solder, and replacing the internal framework for the statue of Apollo, as the *“ancient steel structure, eroded by moisture, had collapsed and caused the lead to cave in”*. The sculpted pieces were carried to the edge of the basin with skiffs and then transported to workshops. The restoration was completed in 1933.

One-off repairs, mainly concerning fractured heads on the horse statues, were carried out in 1955 and later in 1981.

In 2022, nearly a century after the last major restoration campaign, the sculptural group was once again suffering from significant malfunctions. A comprehensive restoration had become vital to ensure the work would be preserved and passed down to future generations.



Removal of sculpted pieces for restoration in 1981
© Palace of Versailles Archives



Removal of the sculptural group for the 1929-1933 restoration
© Palace of Versailles Archives



PART II

A COMPREHENSIVE RESTORATION

STAGES OF THE RESTORATION

SERIOUS DISREPAIR PRIOR TO RESTORATION

Despite regular maintenance, Apollo's Chariot exhibited considerable deterioration due to the technical demands of water features: structural deformations caused by corrosion of the framework, significant deterioration of the lead and severe erosion of the surface coating. The horses and tritons suffered from the most severe structural problems due to both their weight and their inclined position. Apollo and the dolphins, thanks to their straight posture, showed fewer major deformations.



Apollo's Chariot prior to restoration © Palace of Versailles, D. Saulnier



Apollo's Chariot prior to restoration © Palace of Versailles / D. Saulnier

Moreover, the water effects had become discordant, with barely a passing resemblance to their initial, synchronized choreography. The sculptures had shifted or begun to sag over time, leading to a sharp deviation of the angles of water jets. As such, certain nozzles pointed directly to the floor of the basin with no arc in the water features, leading to an outright distortion of the motifs originally intended.



Apollo's Chariot prior to restoration © Palace of Versailles/ T. Garnier



Apollo's Chariot prior to restoration © Palace of Versailles/ T. Garnier

This condition called for an urgent restoration procedure that would durably solve the structural problems that had been affecting the group since the late 17th century, and thus preserve one of the most famous works of sculpture in the Gardens of Versailles.

Apollo's Chariot prior to restoration © Palace of Versailles/ T. Garnier



PROJECT MANAGER

Jacques Moulin, Chief Architect for France's Historic Monuments, Agence 2BDM

CONTRACTING AUTHORITY

Palace of Versailles, Heritage and Gardens Department

CONTRACTORS

Lead sculptures:
Sculptures: FONDERIE DE COUBERTIN
Gilding: ATELIERS GOHARD

- Masonry, dressed stone:
ENTREPRISE LÉON GROSSE / ÉTABLISSEMENT
CHAPELLE

REMOVAL OF THE SCULPTURAL GROUP
6, 7 AND 8 DECEMBER 2022

In December 2022, the 13 lead sculptures were dismantled using a telescopic crane. Each statue was placed on a metal base, strapped and raised with slings and spreaders. Removal operations took three days. The sculptural group was then transported to the Coubertin Foundry, located in Saint-Rémy-lès-Chevreuse, where the restoration procedure could begin.



Removal of Apollo on 6 December 2022 © Palace of Versailles, T. Garnier



Removal of Apollo on 6 December 2022 © Palace of Versailles, D. Saulnier



Removal of Apollo on 6 December 2022 © Palace of Versailles, D. Saulnier

RESTORATION OF LEAD SCULPTURES
JANUARY 2023 - JANUARY 2024

The restoration craftsmen at the Coubertin Foundry started by cleaning the lead shell, removing recent coats of paint and mineral deposits to expose the bare surface and identify the structural work necessary.

Next, they reinforced the sculptures' internal framework, which made it possible to consolidate the structure, ensure better pressure redistribution and prevent future deformation. They also corrected distortions in heads, hooves and busts, taking specific action to remedy the pronounced cracks in the horses' necks. Certain pieces were refashioned to bring back the initial anatomical presentation of the figures.

Finally, the lead shells were restored using a lead-tin alloy compatible with the old lead, cracks were sealed and the horses' bridles, fashioned more recently, were reconditioned.



Restoration of the lead statue of Apollo © Palace of Versailles, S. Giles



Restoration of a lead horse © Palace of Versailles, T. Garnier



Restoration of the lead statue of Apollo © Palace of Versailles, S. Giles



GILDING THE LEAD STATUES

APRIL 2023 - FEBRUARY 2024

Once the lead sculptures were restored, each figure was re-gilded using the traditional gold leaf technique.

Before carrying out this procedure, the gilders prepared the sculptures by applying an anti-corrosion treatment, followed by two coats of primer as well as “gold size” to ensure that the gold leaf adhered to the metal after a period of drying. Gilders like to say that they “*size in the morning and gild in the afternoon*”. The tools used for these procedures have not changed since the 17th century: a gilder’s knife, a cushion and a broad brush known as a gilding tip.

After applying the gold leaf, the restorers burnished the surface to reproduce the original bronze colour. This burnished gold hue will be further accentuated by the water features and iron oxide deposits from the old cast iron pipes. This phenomenon has been observed on the gilt surface of various lead sculptures in recently restored Versailles fountains: the Enceladus Grove, the Latona Fountain and the Golden Children’s basin.



Gilding of a horse by Atelier Gohard © Palace of Versailles, M. Riolet



Gilding of a triton by Atelier Gohard
© Palace of Versailles, M. Riolet



Gilding of a horse by Atelier Gohard
© Palace of Versailles, M. Riolet

RE-INSTALLATION OF APOLLO
15, 16 AND 19 FEBRUARY 2024

In February 2024, Apollo’s Chariot resumed its position in the heart of the Gardens of Versailles. As with the removal of the structure, it took three days to re-install the 13 lead sculptures using a telescopic crane.



Re-installation of Apollo following restoration, 15 December 2023
© Palace of Versailles, T. Garnier



Re-installation of Apollo following restoration, 15 December 2023
© Palace of Versailles, T. Garnier



Re-installation of a horse following restoration, 16 December 2023
© Palace of Versailles, D. Saulnier

RESTORATION OF THE HYDRAULIC NETWORK
JANUARY 2023 - MARCH 2024

All hydraulic work involved in the restoration of Apollo’s Chariot was carried out by the Palace of Versailles Water and Fountain Department.

Fountain artisans worked to reconstitute the water effects as initially designed, re-creating a symmetrical, multi-dimensional composition that enhances the majesty of the fountain.

With diligent precision, they perfected the forms and orientations of the various jets to reproduce the splendour of the varied 17th century water effects, identified as of the preparatory phase of the project based on an assortment of contemporary archival sketches, paintings and engravings The shape of the nozzles was modified to more closely resemble the initial design. Fountain artisans rose to the challenge of replicating the form and volume of the jets during the reign of the Sun King.



Fashioning the basin's central jet
© Palace of Versailles, D. Saulnier



Installation of a new nozzle on a triton
© Palace of Versailles, T. Garnier



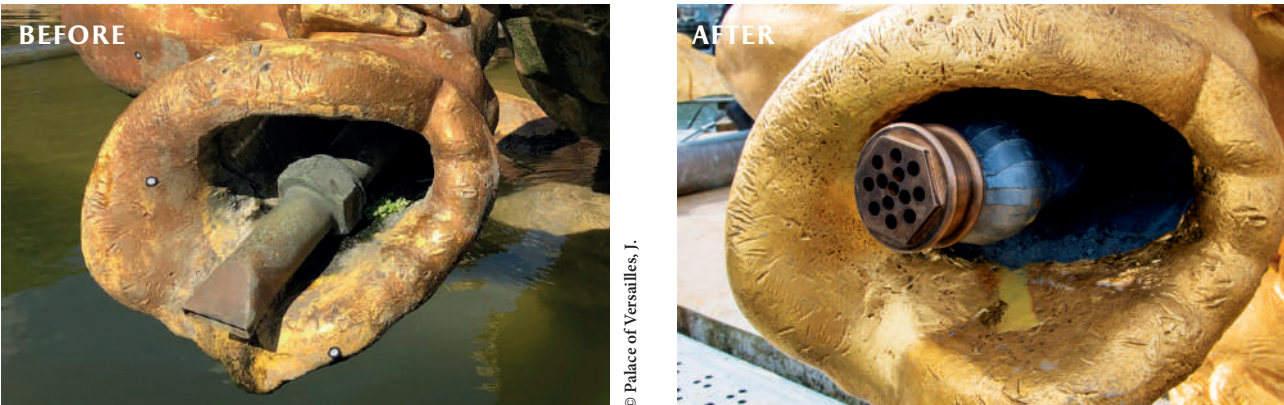
Testing the water effects on a dolphin
© Palace of Versailles, D. Saulnier

A recently discovered description of water features written by Claude Denis in 1692 provides information on the types of nozzles used for this sculptural group. Thanks to this inventory, it was possible to re-create the original nozzles, which replaced the modern pieces installed over the centuries during successive restorations.

- **Horses:** a flat nozzle next to each hoof and spray spout featuring a cross and four holes to create the splash effect of galloping steeds.



- **Tritons and dolphins:** thirteen-holed spray spout for a continuous arching jet.



- **Cherub and lateral water columns:** spray spout featuring eight large and eight small holes, as well as a central aperture, for a total of 17 holes producing a straight vertical jet that expands to create a water canopy.



These procedures follow from the restoration work on the Latona fountain and the Buffet d'Eau fountain, as well as the various maintenance and restoration operations carried out daily in the gardens by fountain artisans to ensure that water can always work its magic at Versailles.

RESUMPTION OF WATER FEATURES
STARTING ON 29 MARCH 2024

Following a spectacular restoration, the water features of Apollo's fountain will come back to life as of 29 March 2024 for the Musical Fountains show. This major heritage initiative has made it possible to re-create the harmony and visual synchronisation of an emblematic fountain while re-establishing the full splendour of the Grande Perspective as envisaged by Louis XIII and Louis XIV.



Resumption of water features in Apollo's fountain following restoration
© Palace of Versailles, T. Garnier

| BEFORE AND AFTER



Apollo prior to restoration © Palace of Versailles/ T. Garnier



Apollo following lead cleaning procedures © Palace of Versailles/ T. Garnier



The horses prior to restoration © Palace of Versailles / D. Saulnier



Apollo following restoration and gilding © Palace of Versailles / T. Garnier



The horses following restoration © Palace of Versailles / T. Garnier



A dolphin prior to restoration © Palace of Versailles/ T. Garnier



A triton prior to restoration © Palace of Versailles/ T. Garnier



A dolphin following restoration © Palace of Versailles/ T. Garnier



A triton following restoration © Palace of Versailles/ T. Garnier





PART III | **THE
PATRON**



For several years, CMA CGM Group has been establishing distinguished partnerships with key players and institutions in the field of culture.

Proud of its Mediterranean roots, CMA CGM aims to shine as a beacon of regional, national and international heritage and culture.

Varied cultural patronage programmes testify to the Group's commitment to promoting and preserving heritage and cultural diversity worldwide. CMA CGM Group supports long-term initiatives aiming to ensure that culture and heritage endure through the ages and across generations past and future.

Through its cultural partnerships, CMA CGM Group also accentuates art and creativity, celebrating and highlighting the work of artists and creators.

Finally, by contributing to ground-breaking projects, CMA CGM Group encourages innovation in the field of culture and heritage.

CMA CGM Group has often applied its transport and logistics expertise to organise exceptional freight operations such as transporting major works of art.

In December 2022, thanks to the patronage of CMA CGM Group, the Palace of Versailles launched the restoration of Apollo's fountain, an artistic treasure within the Gardens of Versailles. This sculptural group, an emblem of Versailles under Louis XIV, depicts the sun god upon his four-horse chariot, racing across the sky as a symbol of daybreak. Today, this masterpiece has been reborn following 18 months of work by skilled artisans in a wide variety of fields.



Restoration of the lead statue of Apollo © Palace of Versailles/ S. Giles

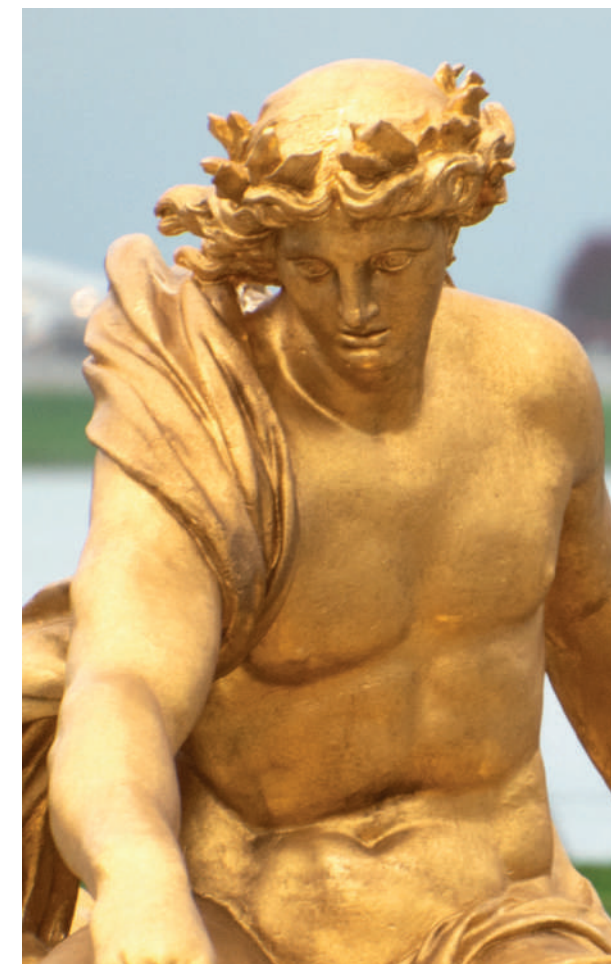


Gilding of Apollo © Palace of Versailles/ M. Riolet



Re-installation of a dolphin following restoration © Palace of Versailles/ T. Garnier

The restoration of the Apollo's fountain has breathed new life into one of the most famous basins in the Gardens of Versailles. Through this project, CMA CGM Group sought to showcase a masterpiece emblematic of this pre-eminent French heritage site. A far-reaching heritage initiative, it imparts new-found splendour in the Grande Perspective as envisaged by Louis XIV.



Apollo following restoration © Palace of Versailles / M. Riolet

ABOUT CMA CGM

Led by Rodolphe Saadé, CMA CGM Group, a global player in maritime, road, air and logistics solutions, serves more than 420 ports around the world across five continents, with a fleet of some 620 vessels. In 2023, the Group transported 21.8 million TEU containers (twenty-foot equivalent units). With its subsidiary CEVA Logistics, a global logistics player that has transported 522,000 tonnes of air cargo and more than 22 million shipments of road freight, and its air cargo division CMA CGM AIR CARGO, CMA CGM Group focuses on consistent innovation to provide clients with a comprehensive and ever-more efficient offering thanks to new sea, land, air and logistics solutions.

A trailblazer for its use of alternative fuels and firmly committed to the energy transition in shipping, CMA CGM Group has set a Net Zero-Carbon target for 2050.

Each year, through the CMA CGM Foundation, the Group supports thousands of children as part of its efforts to promote equal opportunities and education for all. The CMA CGM Foundation also provides emergency responses in situations of humanitarian crisis by applying the Group's maritime transport and logistics expertise to deliver humanitarian supplies around the world.

Active in 160 countries through its network of more than 400 offices and 750 warehouses, the Group employs 170,000 people worldwide, including nearly 4,000 in its home city of Marseille.

For more information: cmacgm-group.com

PRESS CONTACT
media@cma-cgm.com



PART IV | **ALONGSIDE THE
RESTORATION**

| PERFORMANCES

MUSICAL FOUNTAINS AND MUSICAL GARDENS SHOWS

29 March to 31 October 2024

On a family outing or a day with friends, everyone can enjoy the extraordinary beauty of the Gardens of Versailles, discovering working fountains set to the sounds of music that once regaled the royal court. Visitors are entranced by the 55 fountains and basins

with their 600 water features, activated by Palace of Versailles fountain artisans using a lyre-shaped key. Works by the greatest baroque composers, from Lully to Handel, accompany this musical excursion.



Latona fountain during the Musical Fountains show © Palace of Versailles, T. Garnier

NIGHT FOUNTAINS SHOW

8 June to 21 September 2024

Every Saturday night in summer, the gardens of the Palace of Versailles glow with a thousand flames and invite the public on a journey through time set to the music of the Sun King. A unique opportunity to stroll through the groves and admire the fountains bursting with water and light.

As they explore the grounds, visitors rediscover masterpieces of baroque music, from Lully to Charpentier and from Gluck to Rameau. A fireworks show offers a fitting finale to an exceptional evening.



Night Fountains show © Nicolas Chavance - Groupe F

PRESS CONTACT

Nicolas Hustache
+33 (0)1 30 83 73 77 / nhustache@chateauversailles-spectacles.fr
Opus 64
+33 (0)1 40 26 77 94 / opus@opus64.com

2024: THE YEAR OF THE HORSE AT VERSAILLES

"THE HORSE IN MAJESTY, AT THE HEART OF A CIVILISATION" EXHIBITION

2 July to 3 November 2022

As an artistic echo of the Paris 2024 Olympic equestrian competitions, the Palace of Versailles is presenting an exhibition of unprecedented breadth dedicated to the horse and equestrian civilisation in Europe, made possible thanks to the patronage of CMA CGM Group.

Through more than 300 works, viewers explore developments over nearly half a millennium, from the 16th to the 20th century. Beginning at the dawn of the modern era, a time of profound changes to the role and function of the horse in civilian and military society, the exhibition follows history up to the eve of World War I, which marked the end of a horse-drawn civilisation and the animal's new role in the fields of leisure and entertainment.

The exhibition will enliven several of the Palace's most iconic spaces: the Africa Rooms, the Hercules Room, the Hall of Mirrors, the War and Peace Rooms, as well as the apartments of Madame de Maintenon and the Dauphine. Several themes will come together within the exhibition: horses and sovereigns, the Royal Stables, war, science, as well as festivities.

EXHIBITION CURATORS

Hélène Delalex, Heritage Curator, National Museum of the Palaces of Versailles and Trianon

Laurent Salomé, Director of the National Museum of the Palaces of Versailles and Trianon

SCENOGRAPHY

Loretta Gaïtis and Irène Charrat



Head of a White Horse, Théodore Géricault (1791-1824), Paris, Louvre Museum
© GrandPalaisRmn (Louvre Museum) Thierry Le Mage

THE OLYMPIC AND PARALYMPIC GAMES AT THE PALACE OF VERSAILLES

27 July to 11 August, and 3 to 7 September 2024

This summer, the Palace of Versailles Park will host the Olympic equestrian competitions (jumping, dressage and eventing: show jumping, dressage and cross-country), the five modern pentathlon tournaments and para-equestrian events.

The events will take place in temporary facilities installed on the Étoile Royale site at the western edge of the park, as well as around the Grand Canal: a riding arena with a 16,000-seat grandstand, as well as 5.3 km (3.3 miles) of obstacles and cross-country courses.

These temporary installations will be designed by the Paris 2024 teams in coordination with the Public Establishment to ensure perfect preservation of the site's natural, environmental and architectural features. Following the Games, all temporary infrastructure required to host the competitions will be removed and the grounds restored to their previous condition. As a lasting legacy of the event, the Public Establishment will carry out a comprehensive restoration of the Etoile Royale Gate.

Meanwhile, the Palace of Versailles will remain open throughout the Olympic Games. All visitors can take advantage of a specially designed programme focussed on art and sport: tours, workshops, family events and performances.



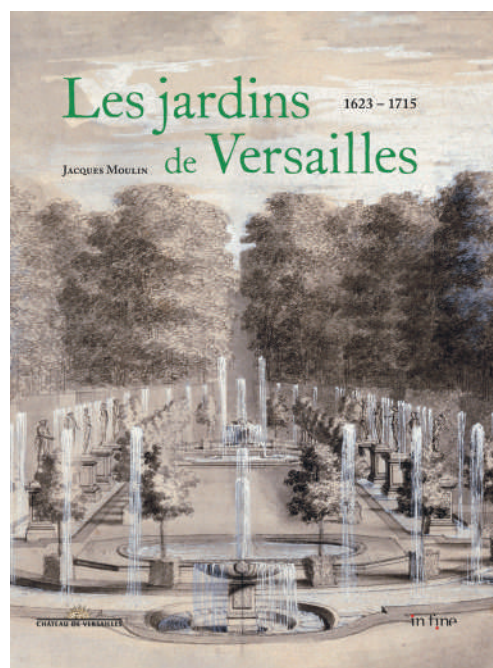
Test event (August 2023)
© Palace of Versailles, D. Saulnier

| PUBLICATIONS

LES JARDINS DE VERSAILLES 1623-1715

The Palace of Versailles is pleased to present the first volume of the two richly illustrated books by Jacques Moulin, Chief Architect for the Historic Monuments of the Estate of Versailles, dedicated to the history of the Gardens of Versailles. Drawing from an assortment of hitherto unpublished archival documents, this first volume looks back on the evolution of the gardens of the Palace of Versailles between 1623 and 1715, from their creation under Louis XIII to the death of Louis XIV. It brings to light the work of successive master gardeners and commissioners who brought forth this unrivalled landscape architecture. Indeed, André Le Nôtre was not the sole instigator.

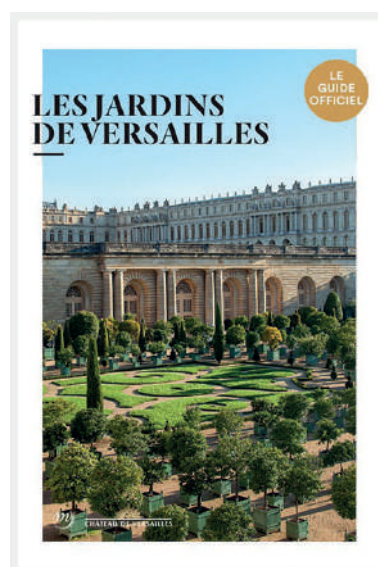
Jointly published by the Palace of Versailles and In Fine Éditions d'art 256 pages and 200 illustrations
€49.00



GUIDEBOOK : LES JARDINS DE VERSAILLES

This comprehensive guide helps visitors find their bearings within the vast Gardens of the Palaces of Versailles, the Trianon and Marly, while also discovering, in situ, the history of a particular grove, basin or parterre, the sculptures adorning them, as well as some of the remarkable trees that accentuate the majesty of the grounds. More than a simple guidebook, it offers insight into the gardens so that visitors miss none of the marvels waiting to catch their eye at every step and along every pathway. This lavishly decorated volume includes two detailed maps to facilitate orientation.

Jointly published by the Palace of Versailles and RMN
128 pages
€15.00



Water features in Apollo's fountain following restoration © Palace of Versailles, T. Garnier





PART V | **PRACTICAL
INFORMATION**

PRACTICAL INFORMATION

DIRECTIONS FROM PARIS

RER C to Versailles Château – Rive Gauche

SNCF trains from Montparnasse Station to Versailles - Chantiers.

SNCF trains from Saint-Lazare Station to Versailles - Rive Droite.

Bus 171 from the Pont de Sèvres RATP to Versailles - Place d'Armes.

Highway A13 (towards Rouen), exit: Versailles – Château.

Parking at the Place d'Armes. Parking is available for a fee (free of charge for people with disabilities, and during performance nights after 7.30 pm).

HOURS OF OPERATION

The Gardens of Versailles are open to the public every day:
- 29 March to 31 October 2024: 8.00 am to 8.30 pm,
- 1 November 2024 to 31 March 2025: 8.00 am to 6.00 pm.

PRICES

Paid admission to the Gardens on days when Musical Fountains and Musical Gardens shows are scheduled.

PALACE OF VERSAILLES APP

Download the Palace of Versailles app to enjoy audio-guided itineraries in the Gardens of Versailles.

Available via the App Store and Google Play.
onelink.to/chateau



Apollo following restoration © Palace of Versailles/ T. Garnier

Two horses following restoration © Palace of Versailles / D.



